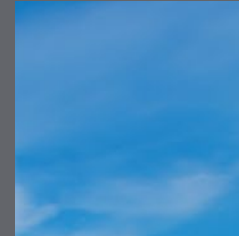


# Atria. at last!

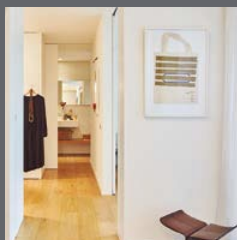
List of materials.



**metrovacesa.**  
at last!



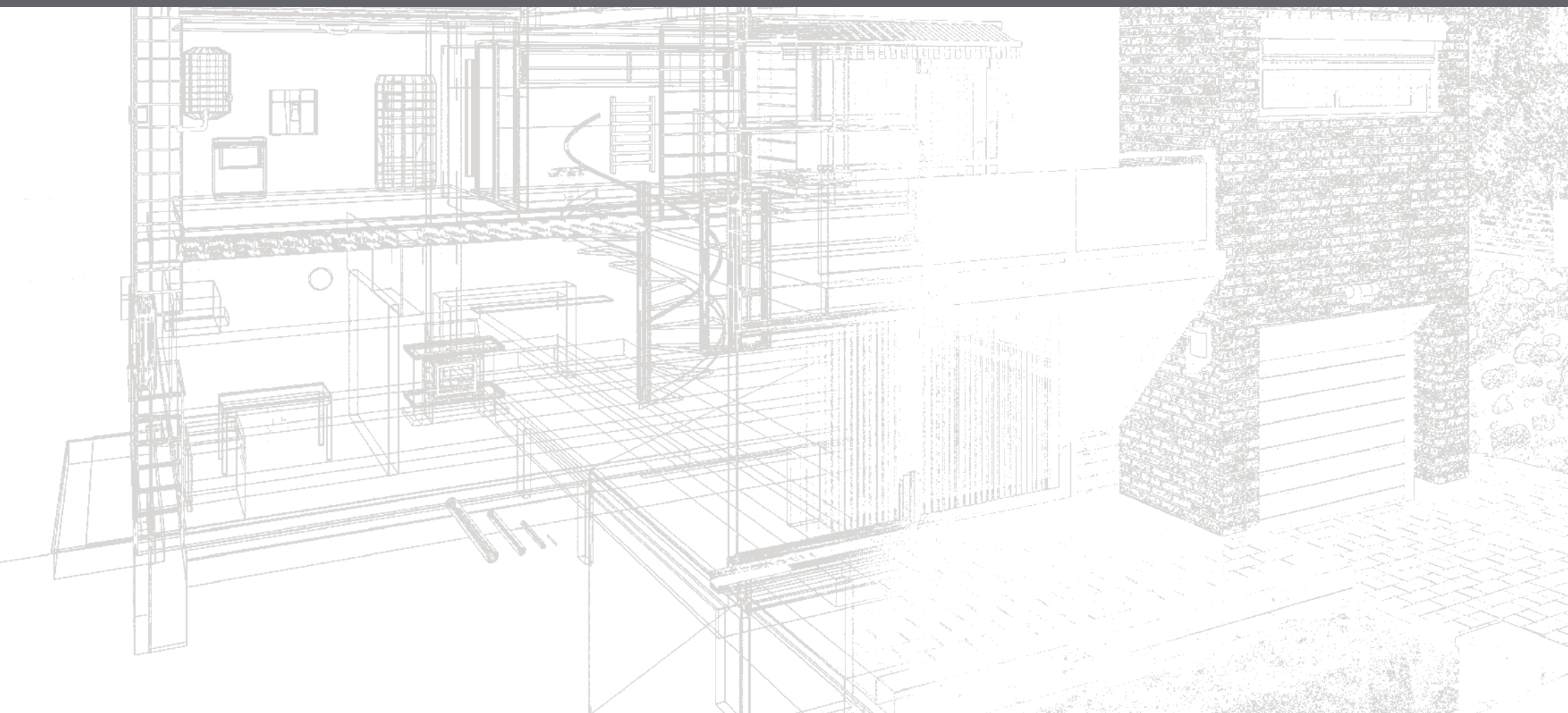
metrovacesa.  
at last!



### Quality and comfort

The quality of our selected materials, together with our remarkable designs, produce unique homes.

We work with the best architects and interior designers so that you can have a home that really changes your life.







The images are not real and serve illustration purposes only

# Contents

- |                                   |                                      |   |                                    |
|-----------------------------------|--------------------------------------|---|------------------------------------|
| <b>1</b> Foundation and structure | <b>6</b> Partitioning and insulation | <b>11</b> False ceilings and paintwork                | <b>16</b> Garage and storage rooms |
| <b>2</b> Façade                   | <b>7</b> Flooring and wall coverings | <b>12</b> Electrical, TV, and telephone installations | <b>17</b> Energy qualification     |
| <b>3</b> Roofs                    | <b>8</b> Bathrooms                   | <b>13</b> Heating, air conditioning and hot water     |                                    |
| <b>4</b> Exterior carpentry       | <b>9</b> Sanitary ware and taps      | <b>14</b> Ventilation and extraction system           |                                    |
| <b>5</b> Interior carpentry       | <b>10</b> Kitchens                   | <b>15</b> Access and common areas                     |                                    |

# 1 Foundation and structure

Both the foundation and the structure will be made with **reinforced concrete**.

# 2 Façade

The **exterior enclosures** of the homes will be made with continuous coating and plastic paint, high performance thermal insulation, air chamber and interior plasterboard partition walls with thermal insulation.

# 3 Roofs

The **non-walkable roofs** will be constructed with thermal insulation and gravel or artificial grass, depending on location.

The **terraces** of the homes will be tiled with outdoor stoneware tiles.

# 4 Exterior carpentry

The access to the terrace from the living room and the kitchen is **aluminium carpentry with double glazing and a thermal break**, sliding and folding sashes, respectively, without blinds, with lacquered finishes in the same colour on both the interior and exterior of the carpentry.

The bedrooms will have the same characteristics depending on their location, with aluminium blinds with thermal insulation and insulated shutter boxes. In the bathrooms, there will be tilt-and-turn windows without blinds.

Aluminium carpentry with  
double glazing with  
thermal break.

Modern design and  
attractive volumetry.







## 5 Interior carpentry

Access to the home is through a reinforced door with security lock finished with lacquered panelling to match the interior carpentry.

Smooth lacquered interior doors.

Modular wardrobes with hinged doors, lacquered to match the rest of the carpentry, lined inside, including the shelf and hanging rail.

## 6 Partitioning and insulation

The partition walls between the different homes will be built with brick or plasterboard partitioning systems, complying with current acoustic regulations. They will be lined on both sides with plasterboard and thermal insulation inside.

Adequate thermal and acoustic comfort.

Modular wardrobes  
with interior lining.

The images are not real and serve illustration purposes only



The images are not real and serve illustration purposes only

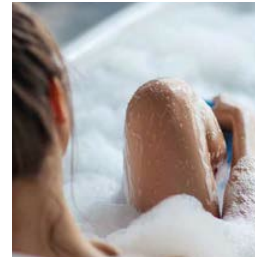


## 7 Flooring and wall coverings

For the floors of the home and bathroom we will use porcelain tiles and PVC skirting boards in the same colour as the wood carpentry.

## 8 Bathrooms

The vertical surfaces of the main bathrooms will be tiled with porcelain tiles.



The images are not real and serve illustration purposes only



The images are not real and serve illustration purposes only



Spacious rooms to make  
your life more comfortable.



## 9 Sanitary ware and taps

Bathrooms will feature vitrified porcelain sanitary fixtures.

The main bathroom will include a double sink and cabinet. The secondary bathroom will have a wall-mounted suspended sink.

The rest of the sanitary fixtures will have single-lever taps and a thermostatic tap in the shower.

## 10 Kitchens

Furnished kitchen with quartz or porcelain countertops and equipped with appliances.



The images are not real and serve illustration purposes only

## 11 False ceilings and paintwork

False ceilings made with plasterboard throughout the homes, with access panels in areas designated for air conditioning and ventilation units.

Smooth plastic paint on ceilings.

## 12 Electrical, TV, and telephone installations

Electrical installation according to R.E.B.T. (Spanish Low Voltage Electrical Regulations), with high electrification degree.

Top quality electrical mechanisms.

TV and telephone sockets in the living room, master bedroom and rooms required by telecommunications regulations.

Lighting via wall-mounted fixture on the outdoor terrace

Video intercom system with call receiver and colour image display.







## 13 Heating, air conditioning and hot water

Complete installation of air conditioning, with heat pump (cooling and heating) and ducts in the false ceiling. Indoor unit above the false ceiling of bathrooms and outdoor unit mounted on technical roof.

Domestic hot water production system using a renewable energy system.

Indoor water distribution network with polyethylene pipes.

## 14 Ventilation and extraction system

Installation of indoor air renewal with extraction outlets in bathrooms and kitchens.







Imágenes orientativas y no reales

A Residential  
development designed  
with its occupants'  
quality of life in mind.

## 15 Access and common areas

Swimming pool for community use with saline chlorination.

Garden areas providing access to the natural environment with walking paths and resting areas.

Communal area with gym, spa and community lounge.

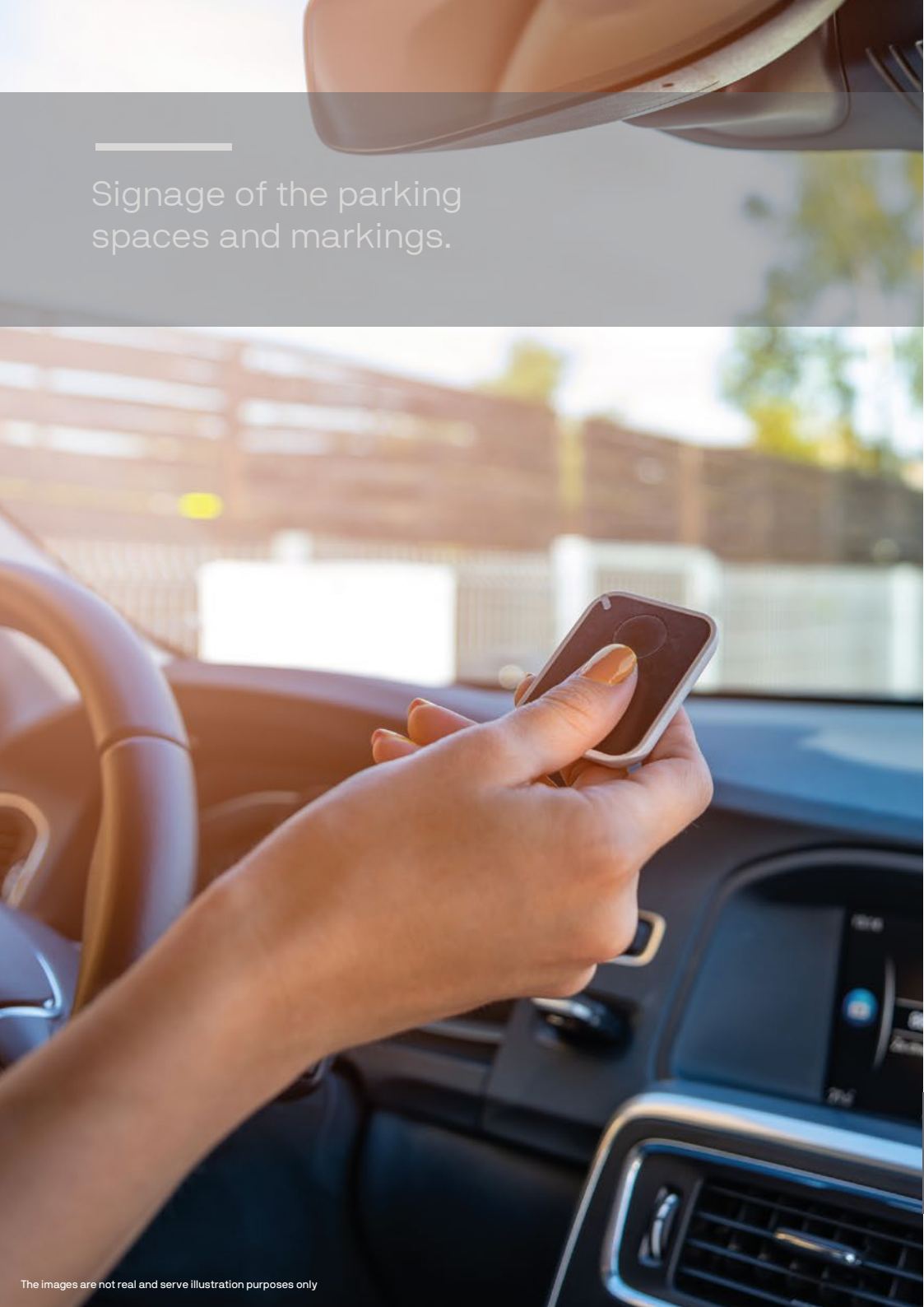


The images are not real and serve illustration purposes only



The images are not real and serve illustration purposes only





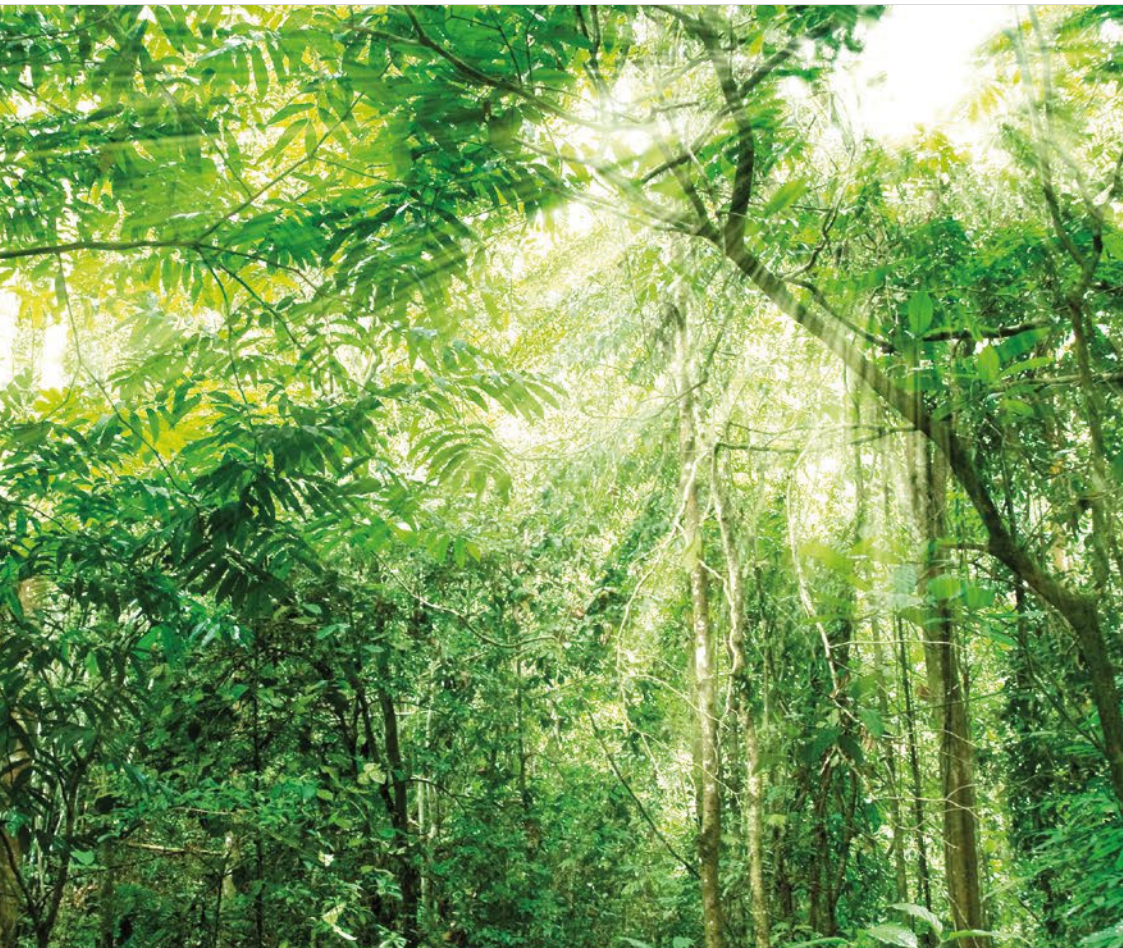
Signage of the parking spaces and markings.

## 16 Garage and storage rooms



The images are not real and serve illustration purposes only





Our quality standards provide excellent outcomes to guarantee the users' comfort and enjoyment of their home, with not alone the best quality materials in the market, but also the lowest energy consumption.



## 17 Energy classification



Improvement of construction solutions in order to optimise energy consumption and guarantee user comfort and enjoyment.



LED bulbs are used in various areas of the building, thus guaranteeing optimal consumption, durability and efficiency.

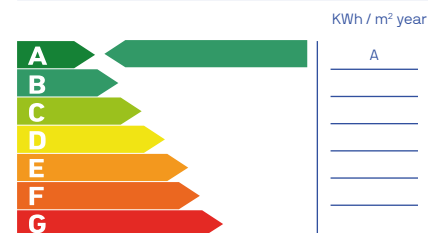


Latest technology in air-conditioning and air-quality systems, with prioritisation of the final outcome product as well as low consumption.

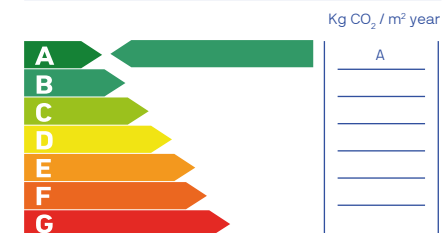


Sanitary units that are environmentally friendly. Their low consumption provides significant savings on the water bill as well as contributing to improve our environment.

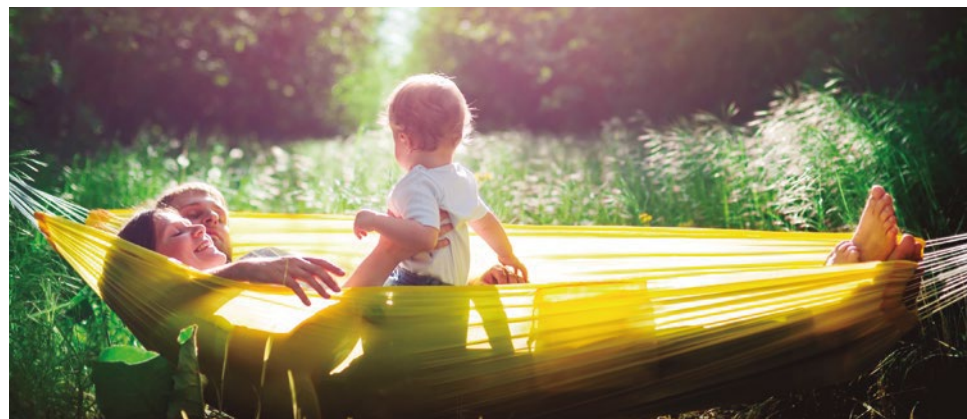
### Non-renewable primary energy use



### Carbon dioxide emissions

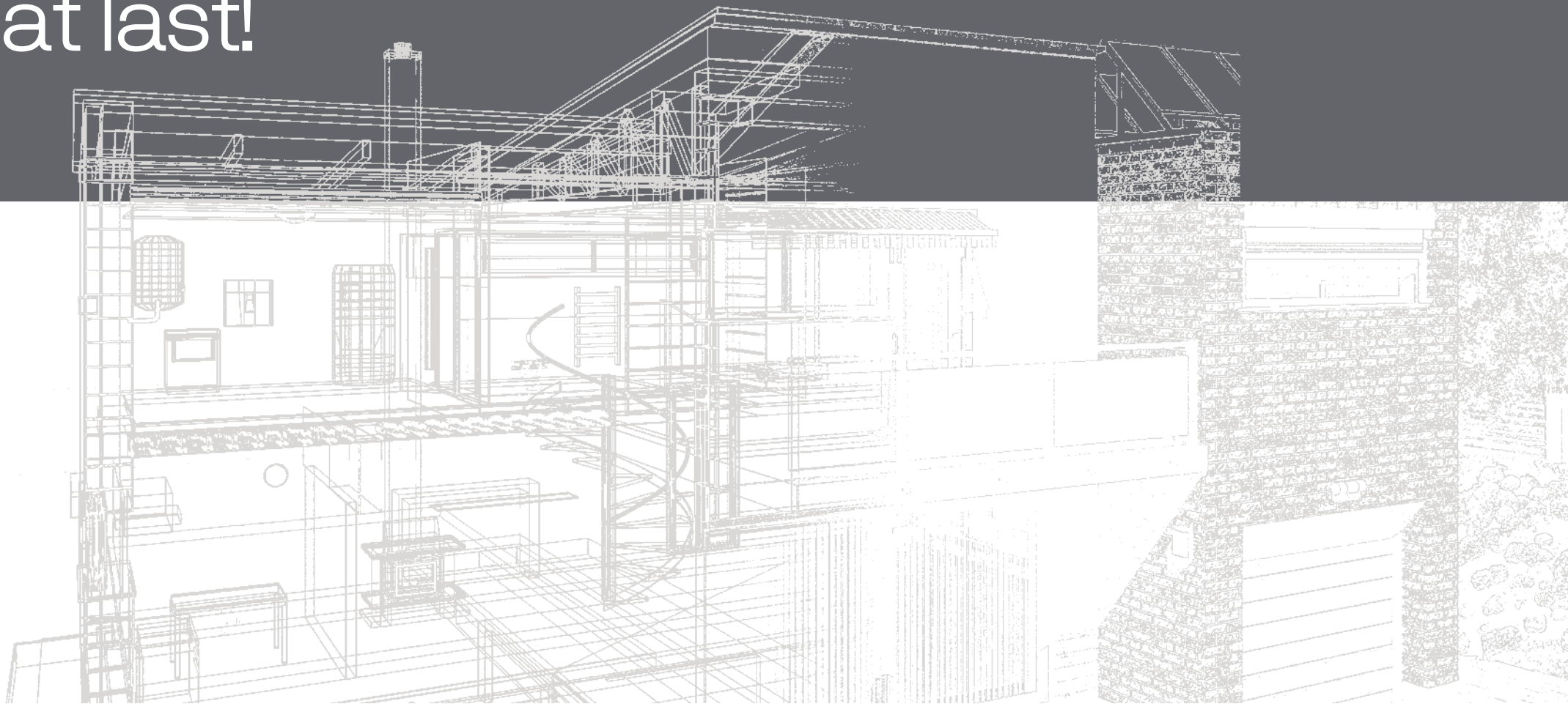


Note: This information, drawings, measurements, dimensions and graphic documentation are for guidance only and they are not contractually binding. They may be subject to potential modifications due to technical, legal or administrative requirements deriving from the granting of the necessary permits and authorisations, as well as any construction or design requirements the Construction Managers might need to consider, without detriment to quality. The furniture, garden features and appliances are shown with illustration purposes only and therefore they will not be included in the property, except in the cases where these are specifically included in the list of materials. The wardrobe dimensions refer to the necessary building gaps. The kitchen furniture and the layout of the appliances may vary slightly subject to their final assembly. The flooring and tiling are also shown for illustration purposes only and modifications may apply. The customisable options must comply with the customisation schedule. Energy certification under progress. Estimations according to initial project calculations.





# metrovacesa. at last!



Find your new home at **metrovacesa.com** | **900 55 25 25** | **infopromociones@metrovacesa.com**

This list of construction materials serves illustration purposes only, and Metrovacesa, S.A. reserves the right to introduce any modifications necessary on account of technical or legal requirements, as per the indications of the head architect, when these are necessary or convenient for the efficient completion of the building or when they are requested by the competent public bodies, in which case they will be replaced by others of equal or higher quality. The images in this brochure are for illustration purposes only and not contractually binding.