

The background of the entire page is a piece of marbled paper with a complex, organic pattern of swirling, vein-like shapes in various shades of beige, cream, and light brown. The texture appears slightly grainy and aged.

∞ Zen Villa

QUALITY SPECIFICATIONS



Quality Specifications

- Exteriors & Fencing
- Flooring: Exteriors & Interiors
- Interior Cladding
- Bathrooms
 - Bathroom
 - Faucets & Fittings
- Aluminium Carpentry & Railings
- Wooden Carpentry
- Integrated Cupboards
- Ceilings
- Installations
 - Climate Control & Underfloor Heating
 - Lighting & Domotics
- additional features

Design by



ARQUITECTOS

erarquitectos.com

Interior design by



GC STUDIO

gc-studio.es



Exteriors & Fencing

- Hercules type mesh + hedge between neighbours.
- Lacquered metal fence + wall on the plot edge



- Gardens with intelligent irrigation systems, ambient LED lighting and water features create an indoor oasis.



Flooring: Exterior & Interior

Interior flooring

- Ivory coloured porcelain floor 90 x 90 cm
- Bathrooms: Ivory coloured porcelain floor 90x90 cm non- slip



Ivory coloured porcelain
floor 90x90 cm



Granite paving stone

Exterior flooring

- Ivory coloured porcelain floor 90x90 cm non- slip
- Driveway pavement: Granite paving stone



Flooring interior



Flooring exterior



Interior flooring
(Ivory coloured porcelain floor 90 x 90 cm)

Interior Cladding

Bathroom Wall Tiling

- Ivory coloured porcelain tiling 90x45 cm
- Ivory coloured porcelain floor 90 x 90 cm



Ivory coloured porcelain
tiling



Ivory coloured porcelain
floor



Exterior Cladding

Pergolas

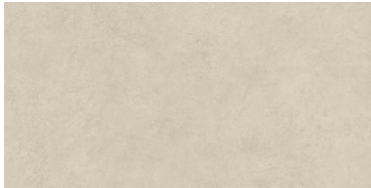
- Oak finish panelling



Oak finish panelling

Façade Cladding

- Cladding ivory coloured porcelain panels
- Aluminium panel with metallic finish





Bathrooms

- Toilets & Bidets: Villeroy & Boch suspended toilet 370 x 560 mm.
- Villeroy & Boch imported flush system 280 x 160 x 16 mm.
- Washbasins: Porcelanosa KRION SERIE RAS
- Backlit mirrors with concealed frame
- Tempered glass shower enclosures



Villeroy & Boch suspended toilet
370 x 560 mm



Villeroy & Boch imported flush
system 280 x 160 x 16 mm.



Backlit mirrors with concealed frame



KRION SERIE RAS washbasins &
vanity unit



Tempered glass
shower enclosures

Bathrooms

Faucets & Fittings:

- Shower & Sink Mixers: Icónico D2 / A-LP22
- Bidet Faucet: Icónico A-VE11
- Stop Valves: Grohe Allure
- Shower head 400 x 400 mm Aqualite
- Shower drain line TECE



Shower head 400 x 400 mm Aqualite



Shower drain line TECE



A-LP22 Sink Mixer



Icónico D2 Shower sink



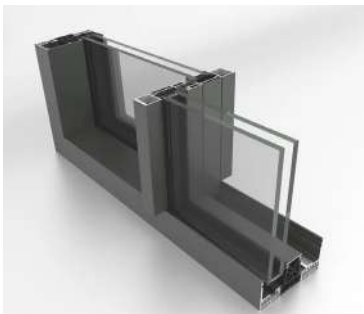
Icónico A-VE11 Bidet Faucet



Grohe Allure Stop Valve

Aluminium Carpentry & Railings

- Reynaers Hifinity Aluminium carpentry



- Laminated glass railings with beveled edges



Aluminium Carpentry & Railings



- Pivoting access door lined in Alucobond with floor to ceiling height.

■ **Wooden Carpentry**

- Interiors lacquered doors with floor to ceiling height and side jambas



- Interior doors with slatted design, with glass backing



■ Integrated Cupboards



Ceilings



- False plasterboard ceiling with lighting trusses



- Ceiling multipanel Oak finish

Installations

Climate control & underfloor heating

- Fan-Coil air-conditioning inside the false ceiling for each enclosures integrated with Airzone.
- Mixed ventilation system with in-line extractors for ductwork.
- Underfloor heating system for hot water in the house, with domotic control.



- Switches & mechanisms



JUNG LS990 Matte White switch

Climate control & underfloor heating

- Indoor lighting ceiling recessed Deltalight Deep Varo.
- Outdoor lighting wall recessed Deltalight Heli X Screen.
- Outdoor lighting ceiling recessed Deltalight Mini Deep Ringo.
- Underfloor heating system for hot water in the house, with domotic control.



Deltalight Deep Varo



Deltalight Heli X Screen



Deltalight Mini Deep Ringo



LED BOX LAND
MINI lightin pool

Additional Features

- Gym & Spa: Fully equipped with sauna & Hammam.
- Parking: Underground garage.
- Home Cinema: Fully equipped.





The commercial brands and technical specifications in this document may be subject to modifications and changes motivated by the needs of the project or by guidelines given by the Facultative Management of the works.