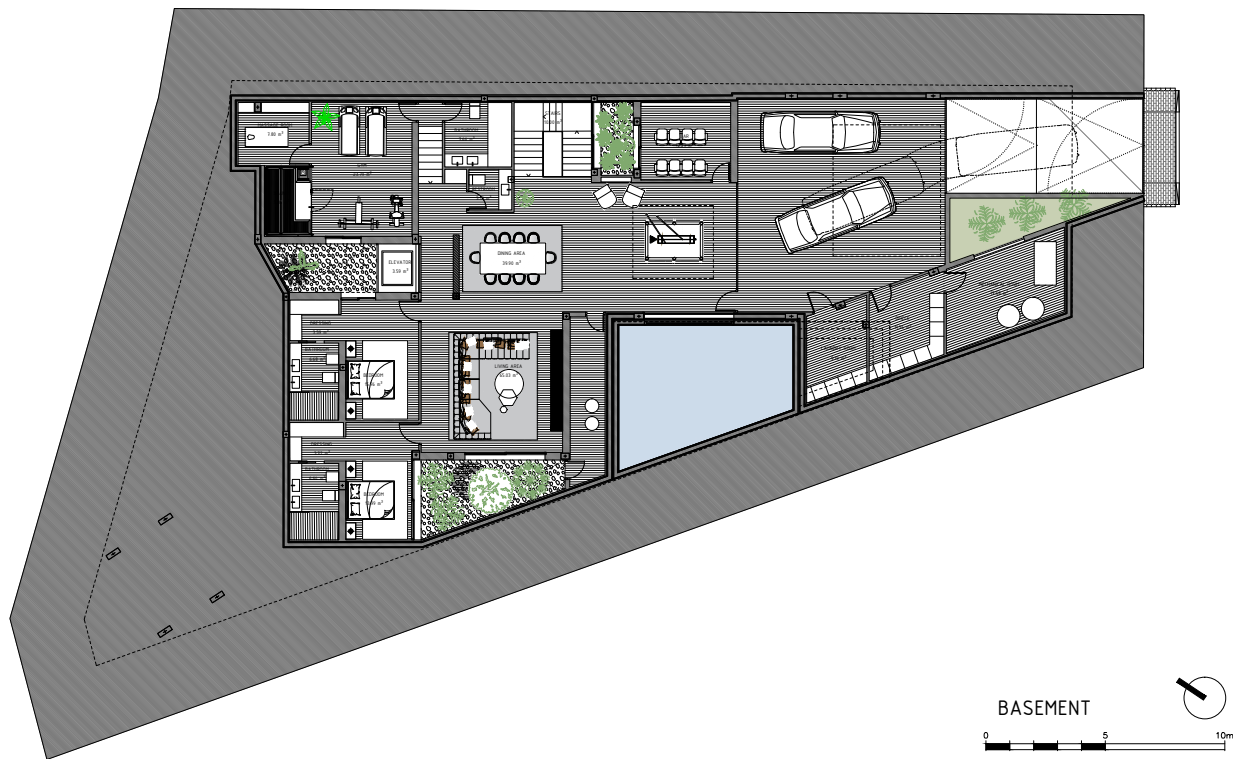


# Satori<sup>∞</sup> Villa

## Tipology 1

Bedrooms	Bathrooms	Orientation
5	6+2	N/E

PRICE ON REQUEST



This plan is subject to change based on the progress of development. The furniture shown is for decoration only. The project manager has the right to make any changes needed for functional, aesthetic, or legal reasons, without lowering the quality of the construction. Dimensions shown are for reference only.





## Tipology 1

PLOT	1014,36 m2
------	------------

### BUILT AREA

Living Area	534,64 m2
-------------	-----------

Terrace Area	296,29 m2
--------------	-----------

TOTAL BUILT AREA	830,93 m2
------------------	-----------

### ACCORDING TO DECRETO 218/2005

Useful Area	534,64 m2
-------------	-----------

Built Area	650,17 m2
------------	-----------