



ISEA

ESTEPONA

PHASE III

Apartment **BA-E1-1A** Vivienda

First floor. Block A

Planta Primera. Bloque A

Enclosed Built Area

Sup. Construida Cerrada

108,31 sqm.

Terrace Built Area

Sup. Construida Terraza

42,80 sqm.

Common Areas Built Area

Sup. Construida Zona Común

122,30 sqm.

Usable Area

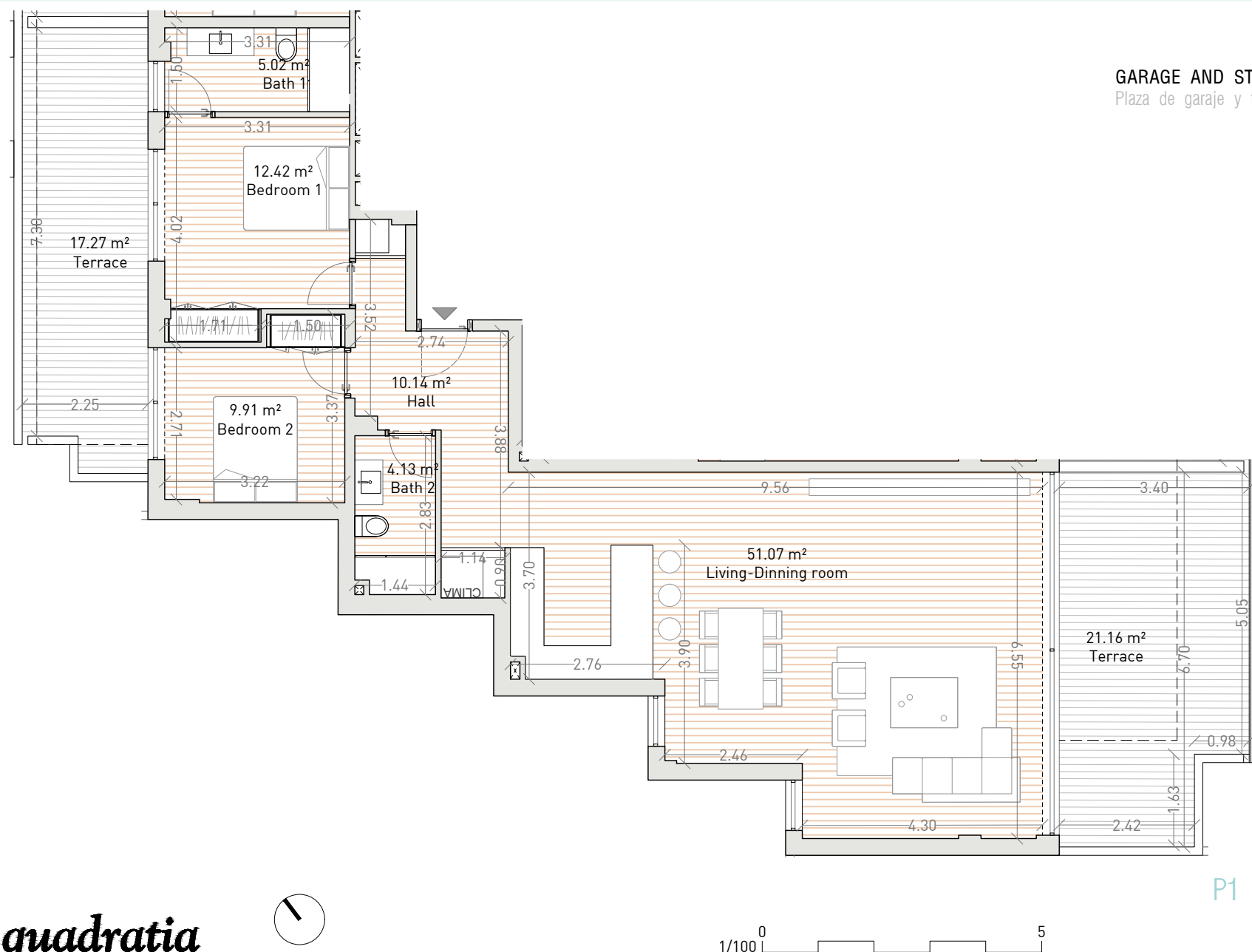
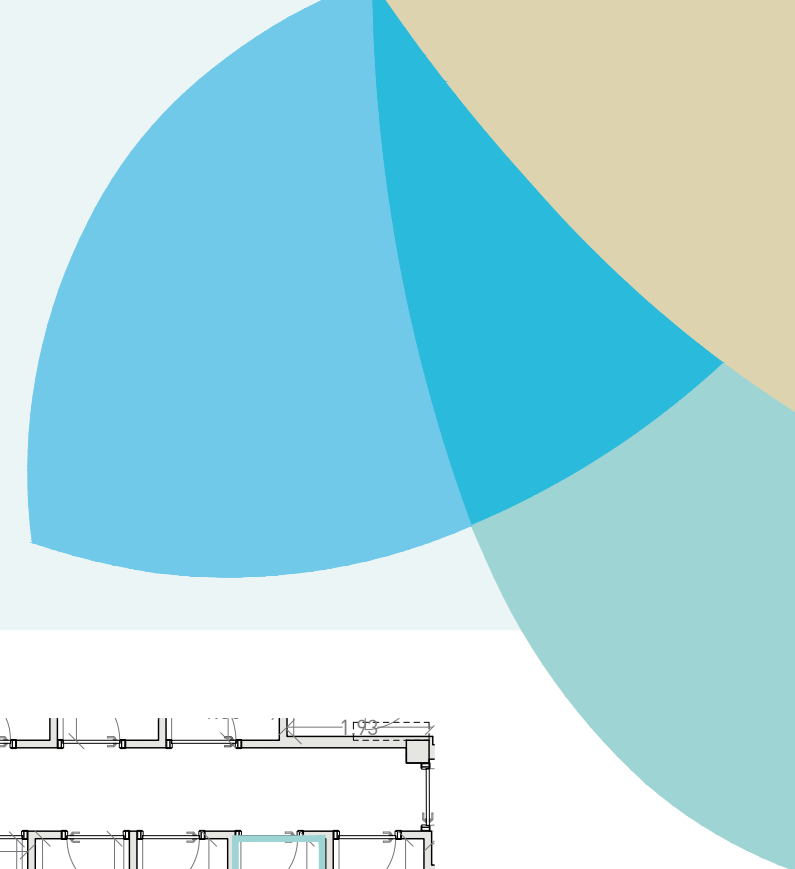
Sup. útil vivienda

92,69 sqm.

Usable Area (Decreto 218/2015)

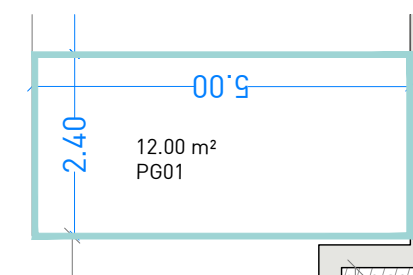
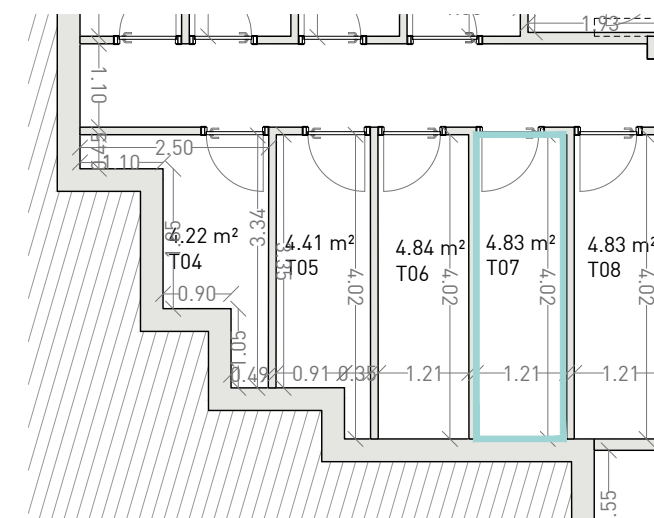
Sup. útil vivienda (Decreto 218/2015)

109,52 sqm.



GARAGE AND STORAGE ROOM

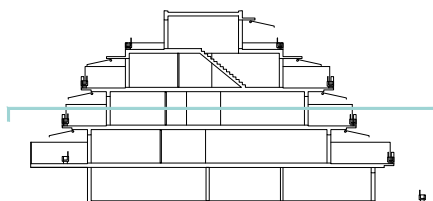
Plaza de garaje y trastero



1/100 0 5

P1

Block / Bloque A



DEVELOPER: QIP COSTA DEL SOL HOME PROJECTS, S.L., Calle Periodista Pirula Arderius n 4 - 03001 Alicante B-42580621

NOTE: This plan is provisional and subject to any changes that may arise from licensing requirements or technical management criteria, without compromising quality. The furniture and household items that appear in the plan, including kitchen furniture, wardrobes and appliances, are merely for decorative purposes and are not included in the apartment. The location of the bathroom fixtures may vary slightly depending on the final assembly. The imperative determinations of the Executive Project or by implications works of the execution, can change the exact position of the facade of doors and windows, as well the surface area may also be increased or even decrease not more than a 10%. This is a non-contractual document.

SALES & INFORMATION

+34 690 000 444

iseaestepona.com