



Bedrooms 4/5

Bathrooms 4

Townhouses for sale in El Paraíso

A modern residential complex where luxury meets comfort on the Costa del Sol.

This exclusive development offers 40 spacious apartments — 20 ground-floor residences with private pools and 20 penthouses featuring rooftop jacuzzis and breathtaking sea views. Designed with contemporary architecture and cutting-edge technology, each home provides a seamless blend of indoor and outdoor living, perfect for relaxing or entertaining.

Set in a privileged location just 8 minutes from Puerto Banús and 10 minutes from Marbella town center, Golden Hills is surrounded by prestigious golf courses and close to the finest beaches in the area.

Within the community, residents enjoy 24-hour security, landscaped gardens, a large communal swimming pool, a fully equipped gym, and a stylish coworking space. Every detail has been carefully considered to offer an elevated lifestyle in one of the most sought-after areas on the coast.

Amenities



Gated community



24/7 security



Co-working space



Communal pool



Storage room



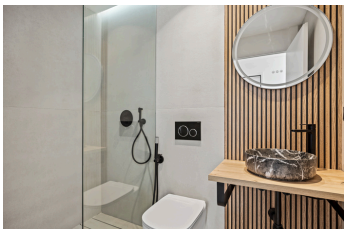
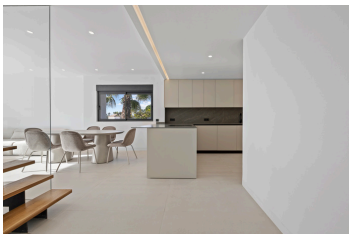
Natural landscapes

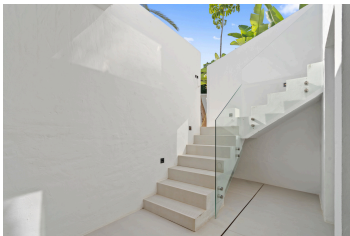


Gym



Underground parking





What's included

Sanitaryware



Bathroom tiles



120 x 120



120 x 120

Flooring tiles



120 x 120

Armored door access



Countertop



Italian design Ascale

Appliances



Only those included

Available units and prices (€)

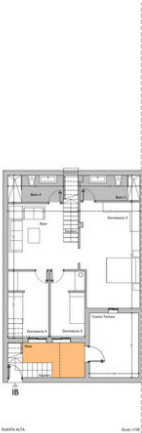
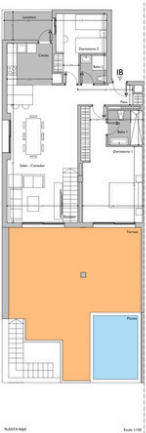
Block 1

Penthouse	Beds	Bathrooms	Pool	Sqm	Price
1-1-2A	4	4	Yes	268.04	860.000
1-2-1A	4	4	Yes	254.31	895.000
1-2-2A	4	4	Yes	269.47	905.000
1-3-1A	4	4	Yes	269.49	895.000
1-3-2A	4	4	Yes	297.25	945.000

Block2

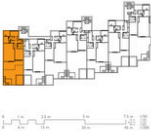
Townhouse	Bedrooms	Bathrooms	Pool	Sqm	Price
2-1-1A	5	4	Yes	268.04	950.00
2-1-2A	4	4	Yes	254.31	890.000
2-1-3A	5	4	Yes		885.000
2-2-1A	5	4	Yes	281.31	917.000
2-2-2A	4	4	Yes	263.46	890.000
2-3-1A	5	4	Yes	293.05	966.000
2-3-2A	5	4	Yes	305.84	995.000

Showflat floor plan for reference



GoldenHills

CUADRO DE SUPERFICIES	
VIVIENDA 2/1-1B	MODULO 1
PLANTA BAJA	SUP. ÚTIL
ESTR	11.17 m ²
DORMITORIO 3	12.62 m ²
BANO 3	5.54 m ²
DORMITORIO 4	10.15 m ²
BANO 4	5.53 m ²
DORMITORIO 5	8.57 m ²
ESCALERA	4.05 m ²
CUARTO TÉCNICO	1.45 m ²
TOTAL	81.68 m ²
PATIO	6.50 m ²
ESCALERA	4.45 m ²
PLANTA PRIMERA	SUP. ÚTIL
PASO	5.58 m ²
SALÓN - CORREDOR	30.85 m ²
COCINA	9.92 m ²
LAVADERO	1.12 m ²
DORMITORIO 1	35.86 m ²
BANO 1	4.49 m ²
DORMITORIO 2	9.94 m ²
BANO 2	3.71 m ²
TOTAL	87.65 m ²
TOTAL SUP. ÚTIL	174.61 m ²
TOTAL SUP. CONS. + COMUNES	384.47 m ²
SUP. PLAZA GARAJE + COMUNES	76.40 m ²
TERAZA DESCUBIERTA	12.38 m ²
POCINA	13.40 m ²



Urbanization plan



	San Pedro de Alcantara	5 km		Gibraltar	62 km		Atalaya	3 km
	Puerto Banús	8 km		Málaga	67 km		San José	3 km
	Marbella	17 km					Aloha College	7 km
	Estepona	18 km					Swans International School	11 km
	Malaga	75 km					British International School	19 km
	Atalaya Golf	<1 km		Fuengirola	47 km		Hospiten	7 km
	El Campanario Golf	1 km		Málaga	72 km		H. Cenyt	13 km
	El Coto	2 km					H. Ochoa	14 km
	El Paraíso	2 km		El Corte Inglés	7 km		H. Quiron	15 km
	Guadalmina	4 km		La Cañada	17 km		H. Costa del Sol	22 km
	Marbella Club	8 km						

Where your dream lifestyle becomes reality.